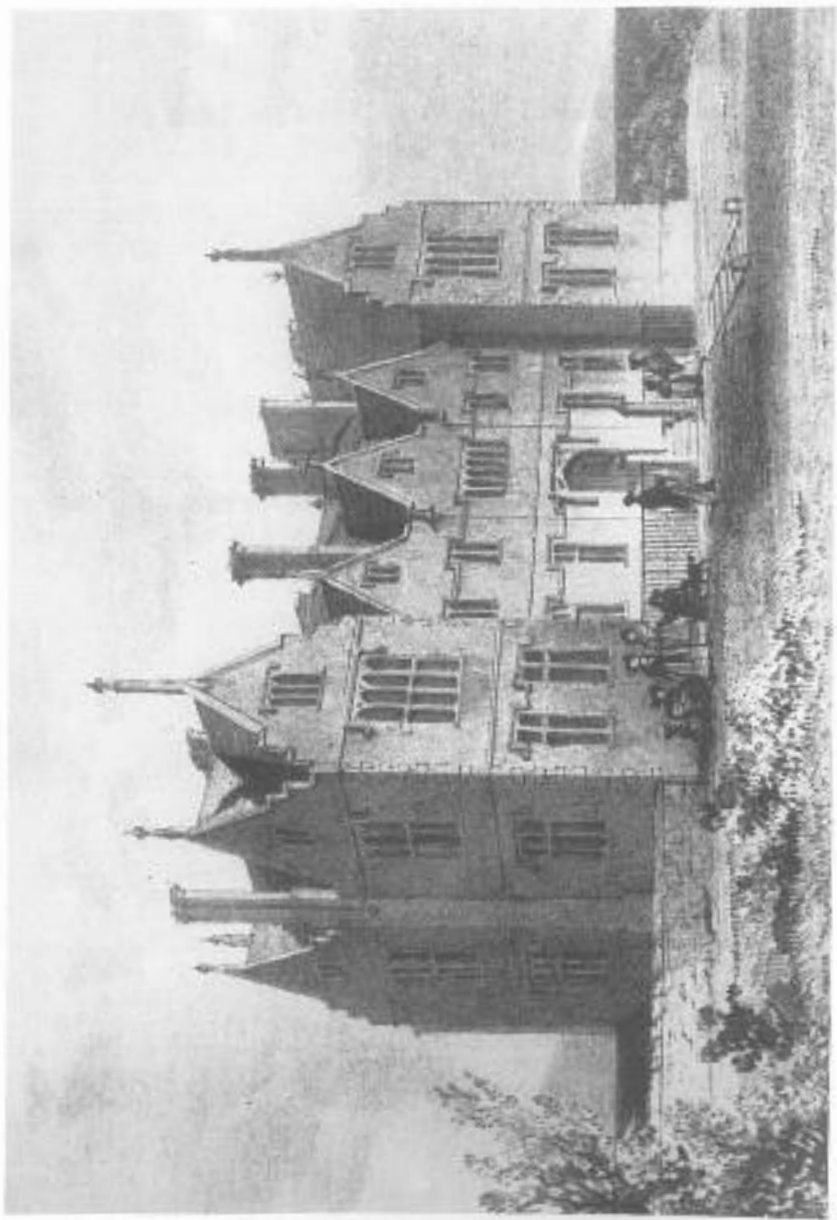


A SHORT HISTORY OF  
ST MARY'S HALL

1836 - 1992



*The original school building, 1836*

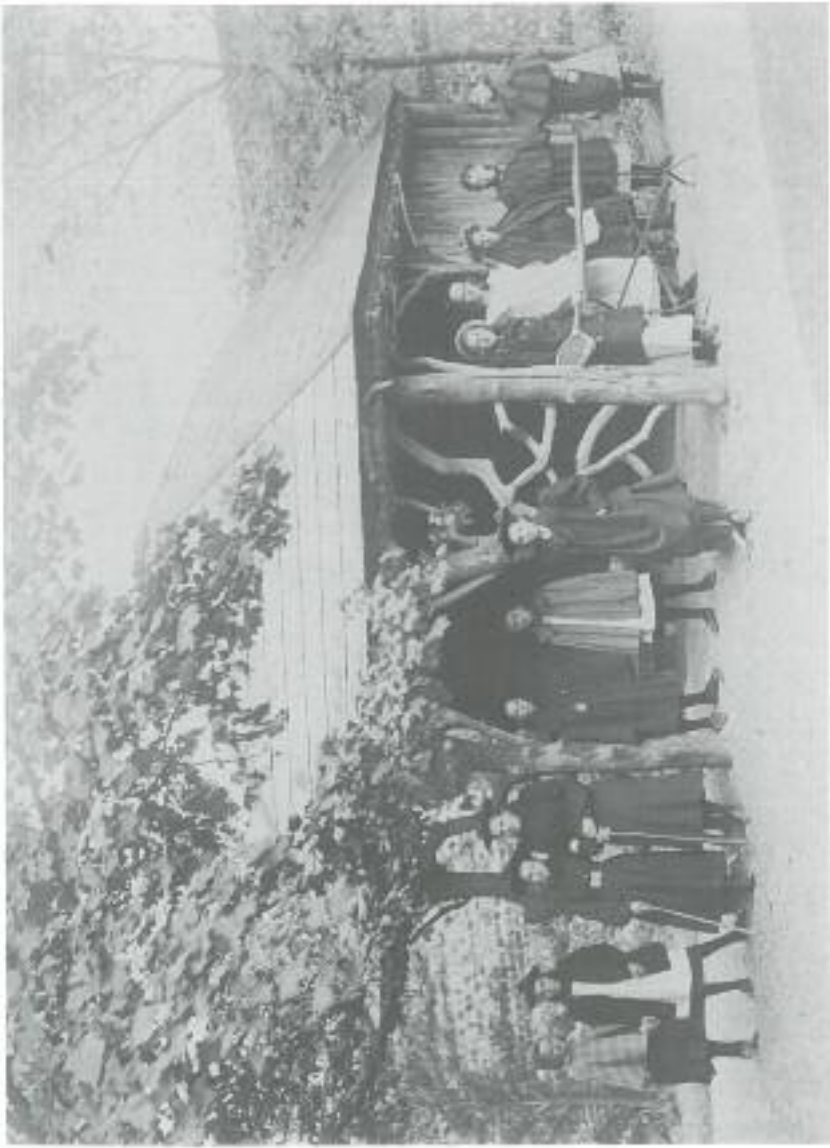


---

*Henry Venn Elliott, 1792-1865, Founder of St Mary's Hall*



*The Cloisters, 1880 or earlier (as school uniform is still being worn.)*



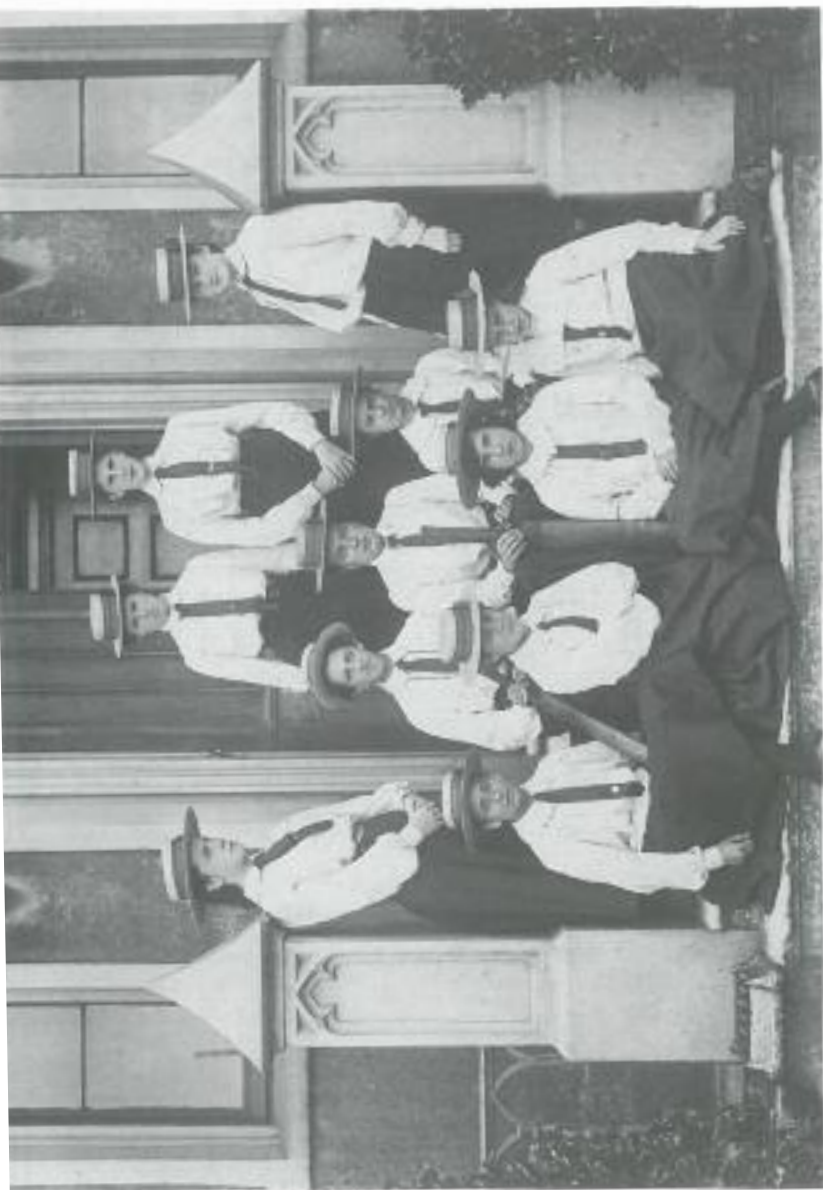
*The Arbor in which Miss Charlotte Elliot composed her hymns. About 1882 as although school uniforms had been discontinued some items are still being worn.*



Miss Birrell (1884-1898) and her Sixth Form (Miss Birrell has her elbow on the table!)



Miss Potter and Sixth Form 1901 (Miss Potter in black)



The Cricket Team 1903





*The Hockey Team, early 1900's (Tamm O' Shanley were no doubt considered suitable headgear for hockey!)*



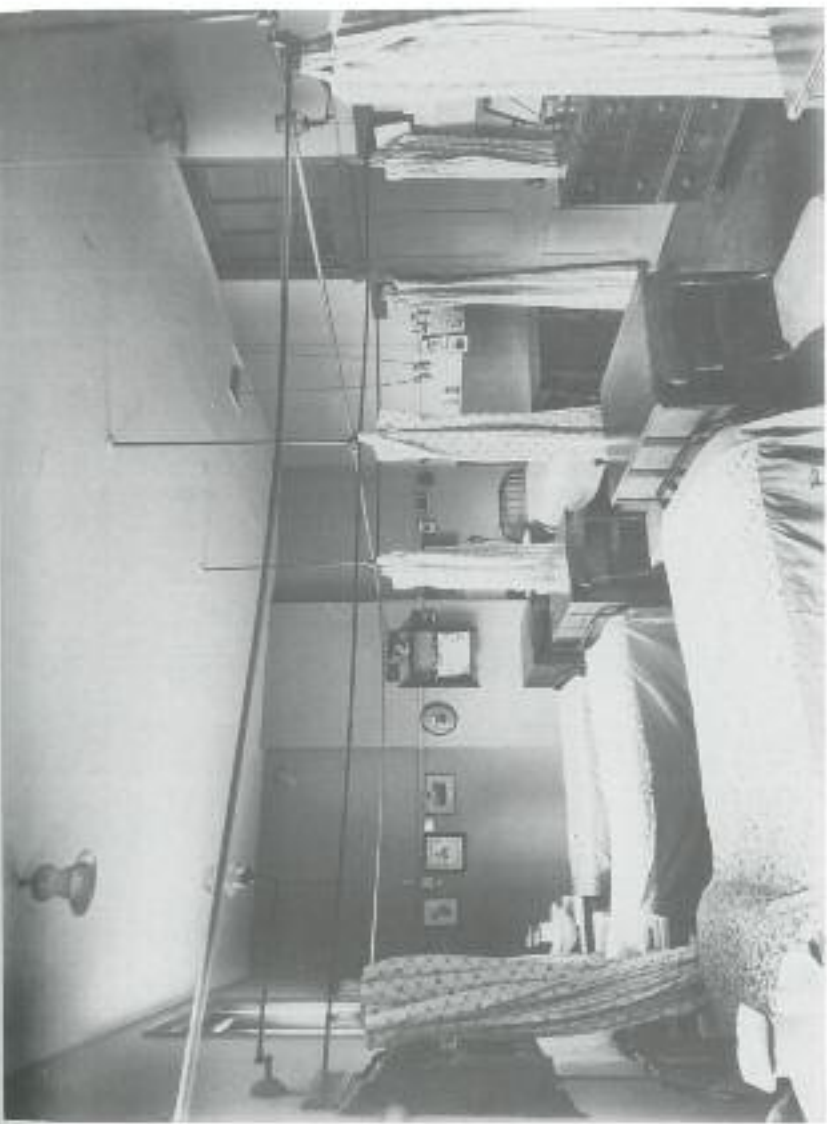
Visit of Princess Mary, 1921



The Tennis Team, 1920's



The Old Art Room, 1920's. (Note gas fighting!)



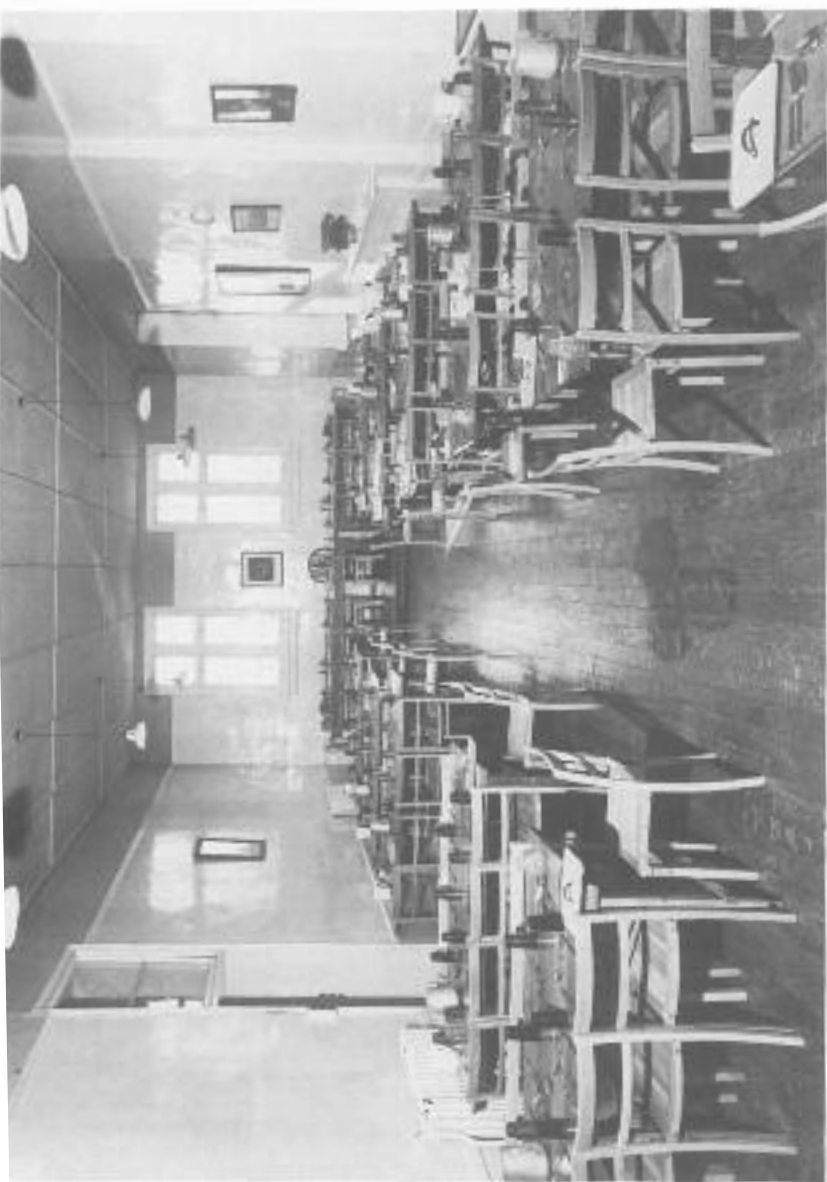
A Dormitory, 1920's. (Note gas lighting and washing facilities!)



The Old Elmer Hall, 1930's

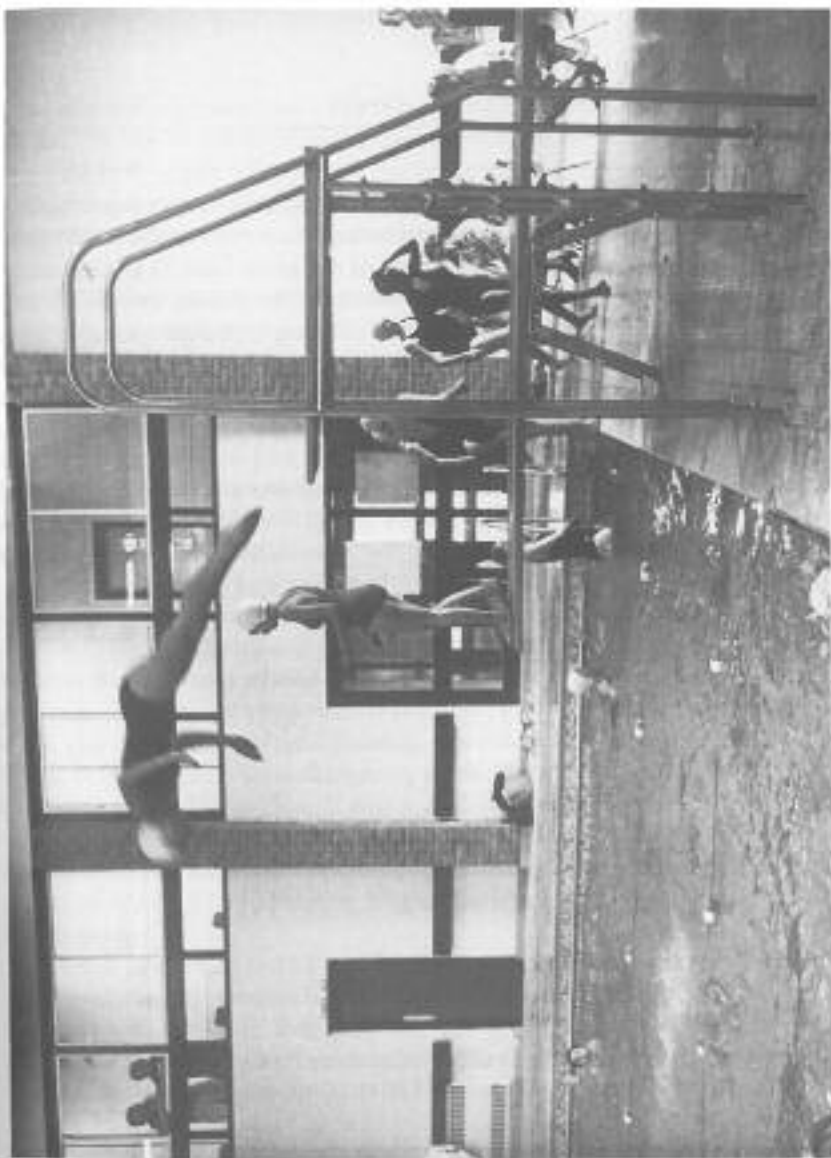


*The Princess Royal, with Miss Connolly, inspects the Guinets, 1956*



*The Old Dining Room, 1965. (Room K and Staff Sitting Room now)*





Opening of the Pool, 1976